

Water Analysis

For drinking water



PF-3 and VISOCOLOR® ECO

The perfect team for drinking water analysis

- Compact photometer of the youngest generation
- Tough and water proof according to IP 68
- Intuitive user guidance
- Determination of Cl_2 , pH, F^- , Fe, ClO_2
- Mobile use at all water intake points

PF-3 and VISOCOLOR® ECO

Water is critical

Drinking water is the most important foodstuff and cannot be replaced. Hence, it has to be wholesome and free of impurities that may adversely affect human health. Continuous water analysis is therefore the fundament for a sustainable and reliable drinking water supply.

The new compact photometer PF-3 allows a quick and easy way of monitoring and checking drinking water parameters for all water suppliers and industrial users at water intake points and during drinking water treatment. Thus, the PF-3 is ideally suited for mobile drinking water analysis. Together with the proven VISOCOLOR® ECO tests, the PF-3 covers analysis needs for some of the most important water parameters (chlorine, chlorine dioxide, pH, fluoride and iron).

PF-3 customer benefits at a glance



Small and tough

- Handy and light weight
- Glass-fibre reinforced housing
- Water proof according to IP 68
- Shock-resistant optics

Ideal for all your analysis needs in the lab and right at the point of interest



Easy and convenient

- Fully developed menu structure using just 4 buttons
- Optional storage for just one 0-measurement
- Results in different units
- Open cuvette slot

Safe results and convenient operation




Smart and clever

- Runs on standard or rechargeable batteries
- Free of charge data export software
- Add new tests and parameters anytime
- Power supply and data transfer via USB port

Flexible use and easy data administration

Technical data compact photometer PF-3

| | |
|-----------------------------|---|
| Type: | LED photometer with 3 interference filters |
| Wavelengths: | Version A: 450 nm, 530 nm, 590 nm |
| Wavelength accuracy: | ± 2 nm, bandwidth at half transmission 10–12 nm |
| Measuring modes: | Pre-programmed MN-tests |
| Cuvette holder: | Tubes 16 mm OD |
| Memory: | 50 results |
| Display: | Backlit graphic display, result with unit |
| Operation: | Self-explanatory menu guidance, plastic foil keypad, test selection via parameter lists |
| Power supply: | 3 AA batteries, rechargeable batteries, USB interface; optional internal accu-pack |
| Housing: | Water proof, IP 68 certified |
| Dimensions: | 170 x 95 x 68 mm |

 This device complies with the following directives: 2006/95/EG - Low-Voltage Directive; 2004/108/EG - EMC Directive

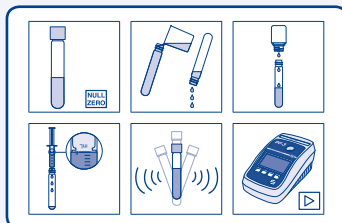
VISOCOLOR® customer benefits at a glance



Reliable and accurate

- Highly accurate measurements due to photometric determination with PF-3
- Simple chemical-analytical methods
- Reaction principles based on internationally acknowledged regulations (DIN, EN, ISO)
- Low susceptibility to interferences assures reliable results

High measurement safety for reliable water analysis



Comfortable and fast

- Intuitive instructions with pictograms
- Colour-coded reagent bottles with clear dosing instructions
- Fast-dissolving reagents save time
- Maximum safety for the user and easy disposal

Convenient handling for quick analysis without the need for time consuming training



Fair and economical

- Individual combination of reagent bundles
- Cost efficient refill packs available
- Competent customer service by highly educated and experienced professionals
- Fast replacement availability in case of repairs

Consistently fair concept with impressive price-performance ratio

VISOCOLOR® ECO tests running on the PF-3

| VISOCOLOR® ECO Test | Measurement range | Test number | Version | No. of tests | REF |
|-----------------------------|---------------------------------|-------------|---------|--------------|---------|
| Chlorine 2, free and total* | 0.05–2.00 mg/L Cl ₂ | 5-15 | A | 150 | 931 215 |
| Free Chlorine 2* | 0.05–2.00 mg/L Cl ₂ | 5-16 | A | 150 | 931 216 |
| Chlorine 6, free and total* | 0.05–6.00 mg/L Cl ₂ | 5-17 | A | 200 | 931 217 |
| Free Chlorine 6* | 0.05–6.00 mg/L Cl ₂ | 5-19 | A | 400 | 931 219 |
| Chlorine dioxide | 0.10–3.80 mg/L ClO ₂ | 5-21 | A | 150 | 931 221 |
| Fluoride | 0.1–2.0 mg/L F ⁻ | 5-27 | A | 150 | 931 227 |
| Iron 2 | 0.04–2.00 mg/L Fe | 5-26 | A | 100 | 931 226 |
| pH 6,0–8,2 | pH 6.10–8.40 | 5-70 | A | 150 | 931 270 |

* This product contains harmful substances which must be specially labelled as hazardous. For detailed information please see MSDS.

Additional tests and versions will be launched successively.



PF-3 and VISOCOLOR® ECO

VISOCOLOR® reagent cases

To provide maximum flexibility MACHEREY-NAGEL offers flexible case solutions for multiple applications. These mini-labs in rugged cases with premium foam inlays (available with or without photometer) can be equipped in an individual and highly flexible way with different test kits. Catering to our customer needs we offer a high range of pre-packed reagent cases including the PF-3, test kits and analytical accessories.



Ordering information reagent case with photometer PF-3

Chlorine tests with liquid reagents*

| Reagent case | VISOCOLOR® ECO Tests | REF |
|--|--|---------|
| PF-3 Cl ₂ | Chlorine 2, free and total | 934 110 |
| PF-3 Cl ₂ · pH | Chlorine 2, free and total; pH 6,0–8,2 | 934 112 |
| PF-3 Cl ₂ · pH · F ⁻ | Chlorine 2, free and total; pH 6,0–8,2, fluoride | 934 120 |
| PF-3 Cl ₂ · pH · Fe | Chlorine 2, free and total; pH 6,0–8,2, iron | 934 122 |
| PF-3 Cl ₂ · pH · F ⁻ · Fe · ClO ₂ | Chlorine 2, free and total; pH 6,0–8,2, fluoride, iron, chlorine dioxide | 934 124 |

Chlorine tests with solid reagents*

| Reagent case | VISOCOLOR® ECO Tests | REF |
|--|--|---------|
| PF-3 Cl ₂ | Chlorine 6, free and total | 934 111 |
| PF-3 Cl ₂ · pH | Chlorine 6, free and total; pH 6,0–8,2 | 934 113 |
| PF-3 Cl ₂ · pH · F ⁻ | Chlorine 6, free and total; pH 6,0–8,2, fluoride | 934 121 |
| PF-3 Cl ₂ · pH · Fe | Chlorine 6, free and total; pH 6,0–8,2, iron | 934 123 |
| PF-3 Cl ₂ · pH · F ⁻ · Fe · ClO ₂ | Chlorine 6, free and total; pH 6,0–8,2, fluoride, iron, chlorine dioxide | 934 125 |

* These products contain harmful substances which must be specially labelled as hazardous. For detailed information please see MSDS.



Envitech Ltd

Unit S7
Capital Business Park
Parkway
Cardiff
CF3 2PU

Email: info@envitech.co.uk

Tel: 0044 2920 364252

Web: www.envitech.co.uk



Since 1911