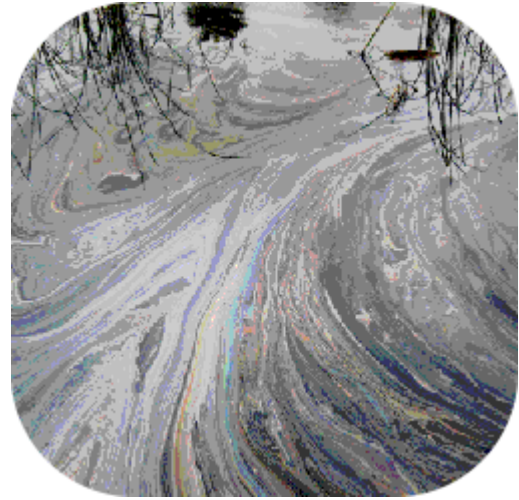




Innovation in Environmental & Process Technology

We **Understand** Water & Waste Water Monitoring

Oil on Water Measurement - OilSys_WW2290



Typical abstraction or drainage channel application

Features:

- Floating In situ operation
- No chemicals required
- Analogue output
- 2 relay outputs
- Data logging (2GB memory card)
- Real time local digital display

Benefits:

- Low cost of ownership
- No frequent calibrations needed
- Minimal maintenance
- Pollution early warning
- Automated shutdown or diversion

Applications:

- Abstract protection
- Surface water runoff monitoring
- Inland waterways
- Industrial effluents



info@envitech.co.uk

Tel: +44 2920 364252

www.envitech.co.uk



OilSys: The WaterWatch2920 system uses a dual hull floating support which directs flow between the hulls and beneath the non contact infra red sensor. The float can be deployed in any application where the surface of the water is relatively calm.

The sensor emits IR light that is reflected from the water surface, any oil present increases the amount of light reflected and this is then converted into the desired output signals.

The monitor will react rapidly to both partial and complete films of oil on the surface of the water. The measuring system is extremely stable and needs only occasional validation to ensure reliable operation. In addition to the alarm output the monitor provides an analogue signal proportional to the probability of oil being present. The higher the probability the more widespread the pollution.

Transmitter Specification

Construction	Dimensions (l x h x d)	213 x 185 x 95 mm (approx.)
	Weight	1.4 kg
	Materials	Polycarbonate
	Protection class	IP65
	Ambient conditions	-20 to 70 °C, 0-95% RH non-condensing
	CE	Compliant
Outputs	Display	Graphic LCD, black on white, Transflective 78x59mm backlit screen 6 button membrane keypad
	Units of measurement	% probability of oil presence
	Analogue (optional)	0/4–20 mA isolated into 750 ohms
	Relays (optional)	3SPCO, 2amp @ 30VDC/230 VAC
	Digital comms	Profibus DP
Sensor Interface		ModTechw-RS485
Power Requirements	Supply voltage	100-240 VAC 50-60Hz, optional 10-30VDC
	Load	30W
Cable entries / Cable size	Max conductor section	2.5mm ²

Sesnor Specification

Construction	Dimensions (l x h x d)	600 x 150 x 590 mm (approx.)
	Weight	2.2 kg
	Materials	Glass coated float with black acetal transmitter
	Support	Float mounted with 2 SS restraining cables
	Medium temperature	0 to 60 °C
	Light source	IR
Detection system	Detector	Reflected intensity, light back scatter
	Response time	0.2 to 120 secs
	Units	% or probability of oil presence