**Features:**

- ❖ Automatic calibration and self cleaning
- ❖ User selectable measuring/cleaning & calibration interval
- ❖ Rugged housing
- ❖ Integral Data logger for value and malfunction logging
- ❖ Several liquor pretreatment systems available

Applications:

Any municipal, environmental or industrial use requiring parameter analysis of aqueous environment

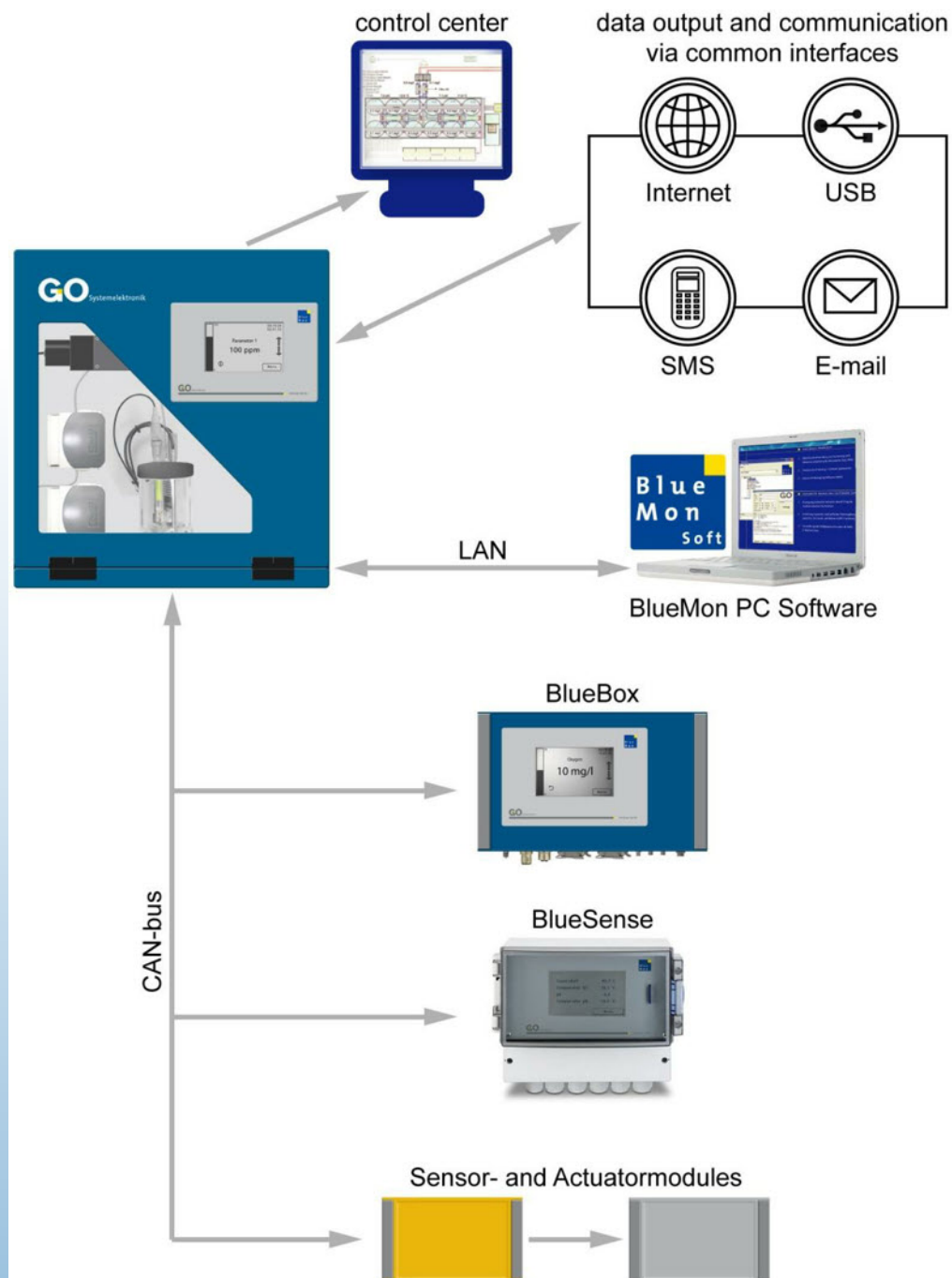
Benefits:

- ❖ Complete flexibility
- ❖ Choice of method to suit parameter, range and sample characteristic
- ❖ Remote communications/fault diagnoses and control
- ❖ Fully automatic operation with cyclical calibration and dilution processes

The BlueMon is a fully automatic, wet-chemical multichannel online analyser. It detects trace concentrations in fluids. The operating interface is especially user-friendly. It may be bought either preconfigured or as a generic system to be programmed by the user, utilising the newly designed Flow-Chart-Method software to program analysis cycles.

Parameters may be detected by directly connected sensors e.g. PH, temp etc, modelled using a UV/Vis spectrometer and software, or measured using ionometric, photometric or titrimetric wet chemical methods.

Integration of the BlueMon into the BlueBox-system



Highlights:

- simple connection of external sensors and actors via sensor- and actor-modules,
- direct connection of the BlueSense transducer
- and the integration into an existing BlueBox-System

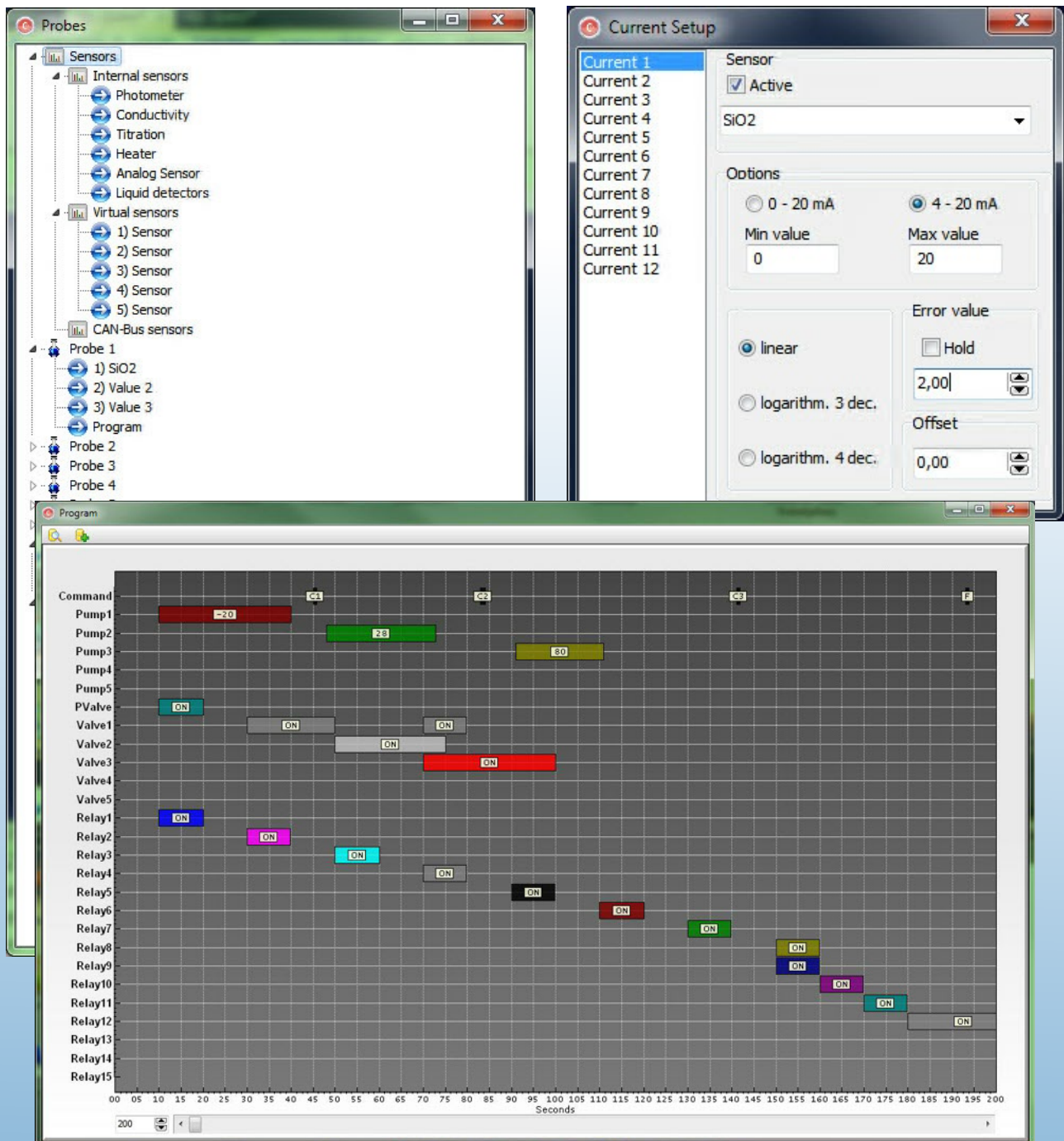
Example measurement

Ionometry	Cl ⁻ CO ₂ DOC F ⁻ K ⁺ NH ₄ NO ₃ ⁻ TC TOC
Colorimetry	Al ³⁺ Co Cl ₂ CN ⁻ ClO ₂ Cr ⁶⁺ Cu ²⁺ Fe ^{2+/3+} Hazes Mn ²⁺ N ₂ H ₄ NH ₄ ⁺ Ni ²⁺ NO ₂ ⁻ NO ₃ ⁻ Phenol PO ₄ ³⁺ S ²⁻ TP
Titrometry S ²⁻	BO ₃ ³⁻ H ₂ O ₂ hardness m-Wert p-Wert peracetic acid
Spectrometry	COD CSB DOC SAK254 TOC NH ₄ ⁺ -N NO ₃ ⁻ -N PO ₄ ³⁻ -P

All sensors from the GO Systemelektronik range are



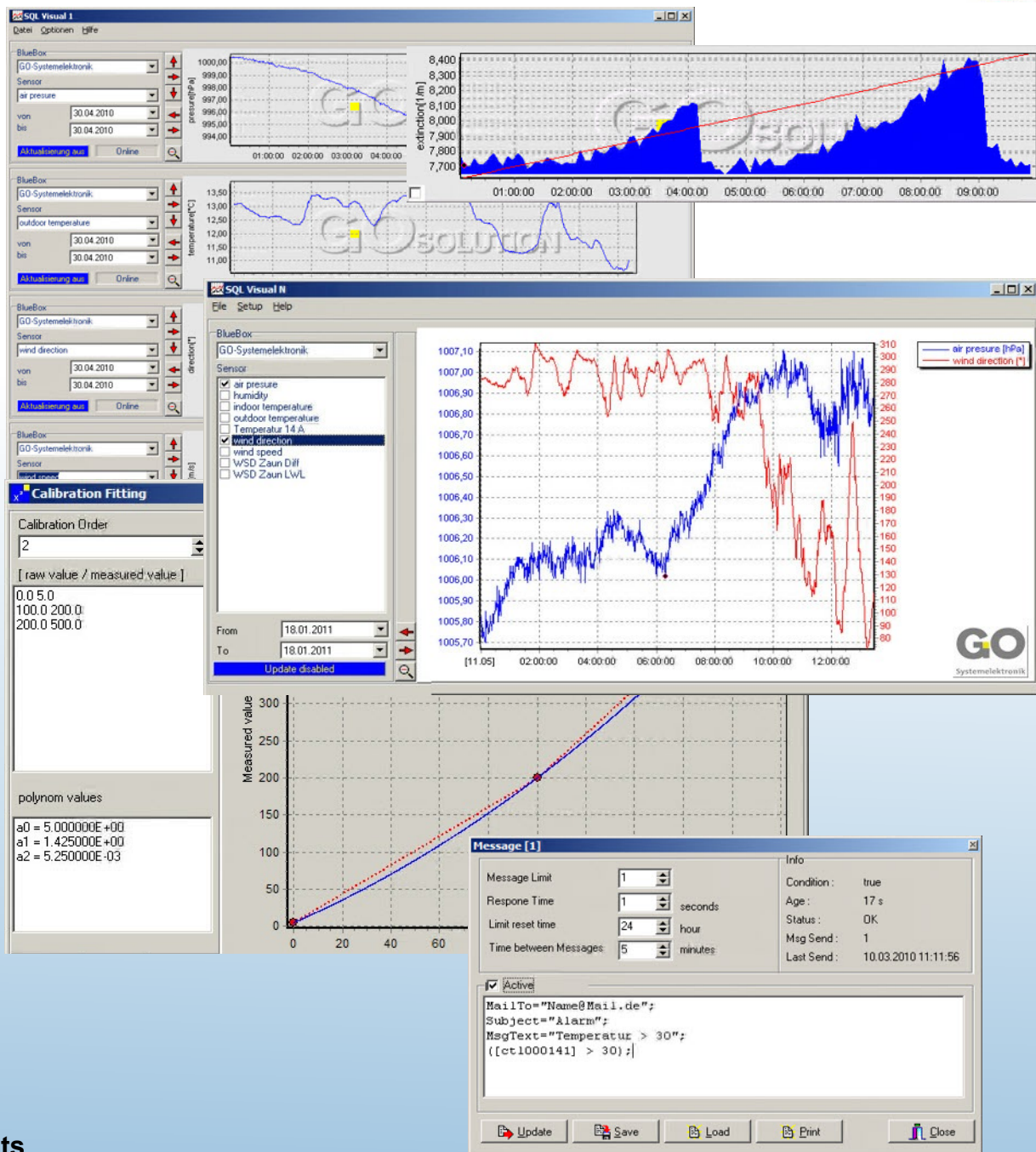
Flow-Chart-Method



Highlights

- Flow-Chart-Method software for programming analysis cycles
- Simple access to measurement parameters and settings
- Virtual sensors to determine complex parameters
- Integration of external sensors for control and calculation

Comprehensive BlueMon PC



Highlights

- SQL based databank system for measurements and configurations
- uniform software for administration of all device components
- integration of data from the various measurements in an SQL databank
- a multitude of visualisation possibilities incl. a visual interface for remote monitoring and operation
- uniform data interfaces for administration, presentation and processing of measurements
- integrated formula programming language

Supplied by: Envitech Ltd. Unit S7, Capital Business Park, Parkway, Cardiff, CF3 2PU
 Tel: 02920 364252, Fax 02920 369876, E-mail: sales@envitech.co.uk

Note To End Users : These specifications are subject to change at any time without notice. Envitech Ltd takes no responsibility for the use of these figures. Please consult Envitech Ltd for the latest specifications before using them in tender submissions or third party quotes... Envitech Ltd reserves the right to change specifications without prior warning. All quoted figures are based on test conditions and are subject to variation due to site conditions.